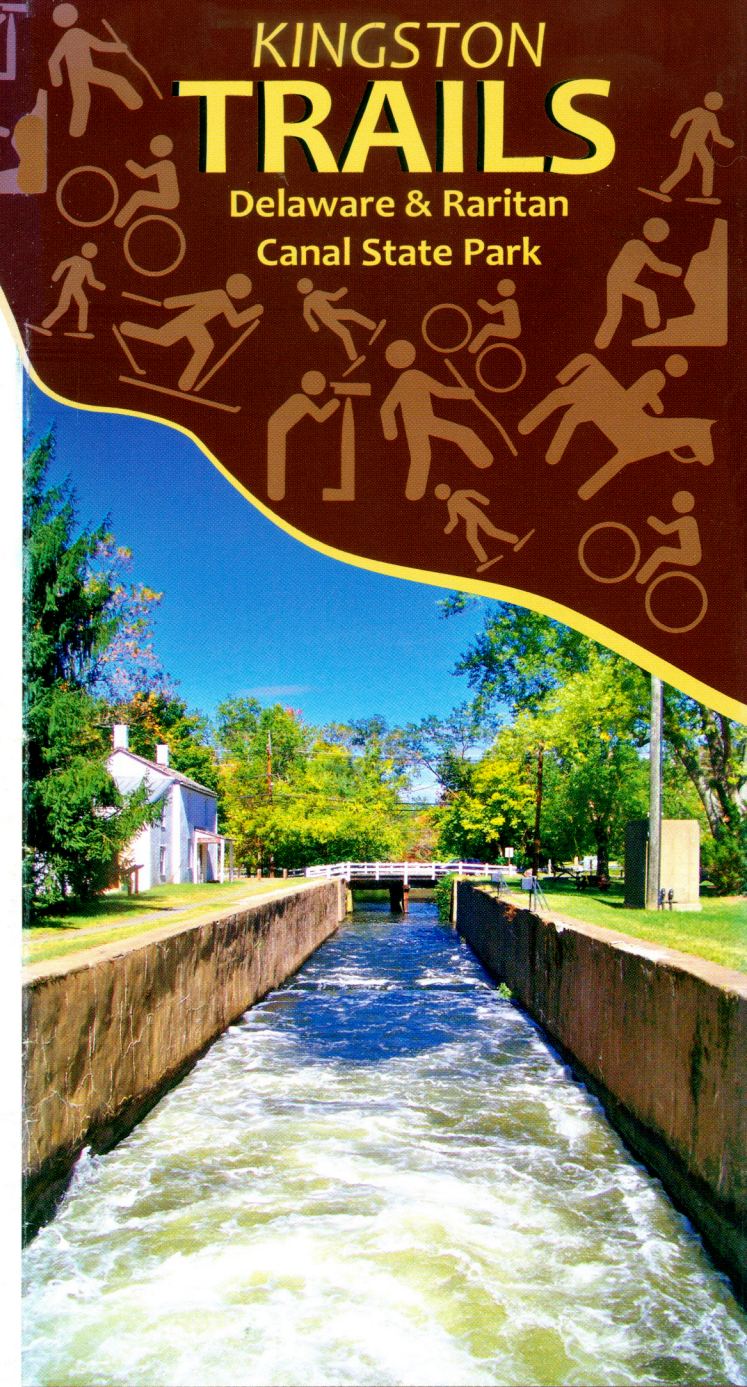




Monarch on Common Milkweed

# KINGSTON TRAILS

Delaware & Raritan Canal State Park



State of New Jersey  
Department of Environmental Protection  
**Division of Parks and Forestry**  
State Park Service  
njparksandforests.org

**Directions:**  
**D&R Canal State Park Office:**  
Route 1, South Brunswick Township: Exit Route 1 via College Road West, turn right onto Seminary Drive and continue straight through the next traffic light to 145 Mapleton Road.

**Heathcote Meadows Preserve:** Route 1, South Brunswick Township: Exit Route 1 via Raymond Road, turn left onto Cleveland Land, take 2nd left onto Monroe Lane. Parking area located at end of Monroe Lane.

**For More Information:**  
**Delaware and Raritan Canal State Park**  
**Cook Natural Area**  
145 Mapleton Road  
Princeton, NJ 08540  
(609) 924-5705

**Heathcote Meadow Preserve**  
**Middlesex County Office of Parks and Recreation**  
PO Box 661  
New Brunswick, NJ 08903  
(732) 745-3900

**Mapleton Preserve & Heathcote Park**  
**South Brunswick Department of Parks and Recreation**  
PO Box 190  
Monmouth Junction, NJ 08852  
(732) 329-4000

**In Case of Emergency Call:**  
**911 or 1-877-WARN- DEP (1-877-927-6337)**

**Photograph Credits**  
Cover photo provided by Vicki Chirco  
Heathcote Meadows courtesy of Middlesex County

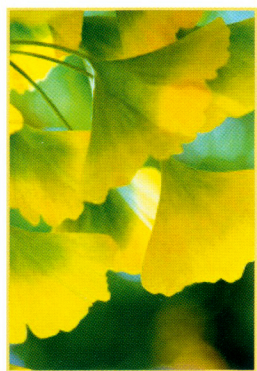
This brochure was funded by the NJDEP and the FHWA Recreational Trails Program

TS 10/16

## KINGSTON TRAIL

Blue blaze • 4.5 miles • Hiking and biking • Easy

The Kingston Trail provides visitors a year round opportunity to explore the area's rich history and natural beauty. The trail traverses through state, county and township lands and is jointly maintained by their park departments.



Ginkgo

Visitors starting at the Delaware and Raritan Canal State Park Office at the Mapleton Preserve will be greeted by a stately row of Princeton Sentry ginkgo trees (*Ginkgo biloba*), along with various other specialty trees that were grown at this site as part of the operations of Princeton Nurseries.

Princeton Nurseries, whose operations started at this site in 1913, encompassed over 1,200 acres and was world-renowned for its innovative practices in cultivating horticulture specimens including the Dutch elm disease resistant 'Princeton Elm'.

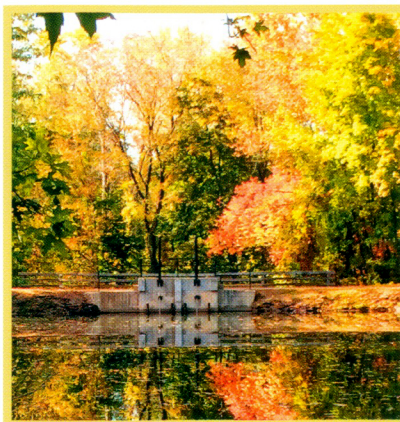
The trail follows along an old nursery road bordered by the Flemer Arboretum and a row of *Arborvitae* – locally called a 'windrow'. From here, the trail crosses over Mapleton Road. **PROCEED WITH CAUTION!**



Japanese Maple

Visitors are greeted by vast grasslands that were once used as the seed bed area for the Nurseries. Note the stunning row of Japanese maples that turn a magnificent shade of red during the autumn season.

The trail's next important historic area is a portion of the Delaware and Raritan Canal State Park. Here visitors have views of the D&R Canal, Carnegie Lake and the Kingston Lock Tender's House.



Turning Basin in Kingston

The trail follows along the canal to the Kingston turning basin where canal boats could be loaded and unloaded or turn around. At this point visitors may either continue eastward on the Kingston Trail or join the main multiuse path of the D&R Canal.

As the Kingston Trail leads back to Mapleton Road, it runs between an old hedgerow of Osage orange (*Maclura pomifera*) trees and remnant row plantings of beech and dogwood from when the nursery was in operation.



Former Princeton Nurseries Propagation House

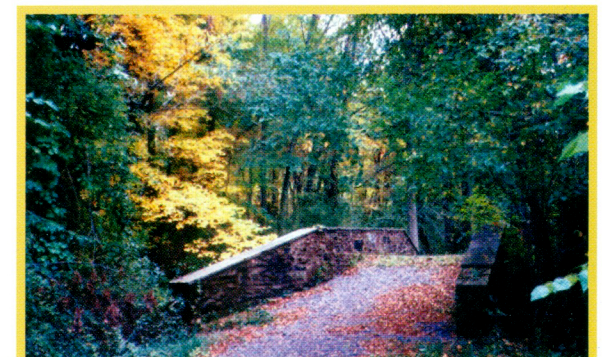
After crossing Mapleton Road, the trail continues past the D&R Canal State Park office and alongside the former shipping office and large warehouses were once bustling with activity from the Princeton Nurseries operations. These buildings are managed by South Brunswick Township. Plans to preserve and interpret the historic Princeton Nurseries buildings are being developed.

Crossing Ridge Road brings visitors on the roadbed of a former branch line of the Camden & Amboy Railroad - the first railroad to operate in New Jersey. As they walk along the raised trail to South Brunswick Township's Heathcote Park, visitors will be greeted by the croaking frogs living within the wetlands near Heathcote Brook. This township park has basketball courts, tennis courts, baseball fields and playground amenities for public use.



Heathcote Meadows Preserve

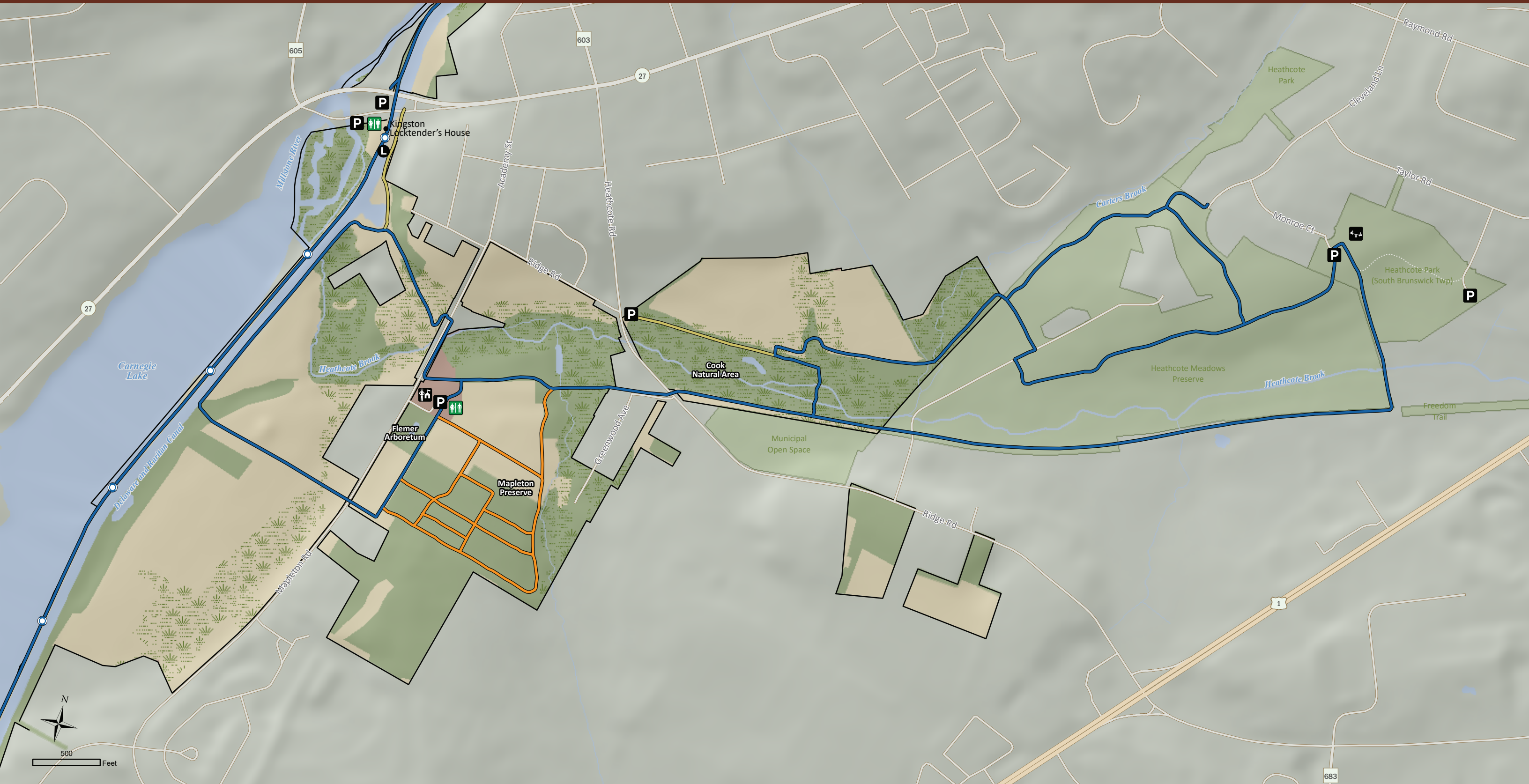
The trail then opens into the Heathcote Meadows Preserve - preserved Middlesex County land. This 89-acre parcel of land provides a glimpse of the rich farming history of the area. Lush grasslands are managed by the county to provide valuable habitat for many plant and animal species.



Cook Natural Area

Visitors are led into mature forests of the Cook Natural Area (an officially-designated New Jersey State Natural Area) and to a crossing over a picturesque stone bridge. The trail then loops back to the rail trail leading back to the D&R Canal park office.

# KINGSTON TRAILS of D&R Canal State Park



- |                     |         |                         |                        |             |                       |
|---------------------|---------|-------------------------|------------------------|-------------|-----------------------|
| Open Field or Grass | Water   | D&R Canal Trail         | Nursery Trail (1.4 mi) | Canal Lock  | Playground            |
| Forest              | Wetland | Kingston Trail (4.5 mi) | Trail Connector        | Park Office | Restrooms (Primitive) |
| Developed Area      |         |                         |                        | Parking Lot |                       |